

ENVIRONMENTAL CONDITIONS:

Ambient air temperature
10°C - 40°C (option 43 °C)

Milk temperature - 1°C - 40°C

Relative humidity - 30% - 80%

ELECTRICAL PARAMETERS:

AC Power Supply voltage
220V/110V

DC Power Supply voltage 12V

Power Consumption 30W max

MECHANICAL PARAMETERS:

Dimensions (W x D x H)
175x175x150 mm

Weight < 1,5 kg

Lactoscan SLP

Standard Light Plastic

Lactoscan SLPA

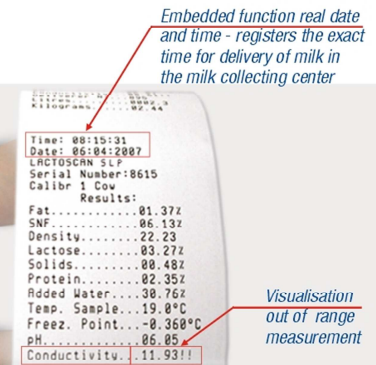
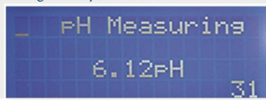
Standart Light Plastic Automat

60 sec, 30 sec, 20
seconds measurement

Both models work with high-end
peristaltic pumps:
- one pump for SLP;
- two pumps for SLPA
(one for the sample, one for the cleaning)



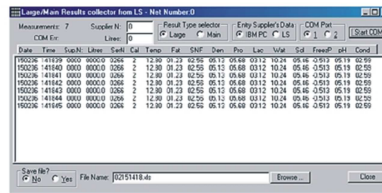
Integrated pH meter



Embedded function real date
and time - registers the exact
time for delivery of milk in
the milk collecting center

Visualisation
out of range
measurement

Conductivity - built-in conductivity sensor
gives high performance freezing point
analysis - avoid poor quality milk due to
added water; detects mastitis
and falsifications with added salt



MILK DATA Program:
milk collection accounting
and management software.

1. Power switch
2. 12 V output
3. 12 V input
4. Serial interface (RS232/ printer)
5. USB (option)
6. Automatic cleaning (option)

**Internet Remote
Firmware Update
(Download center)**



High-quality, durable plastic - ABS with polycarbonate.
Multi-color plastic.



USB Flash
File Open App
Write Byte
Close File



MILKOTRONIC LTD

Bulgaria, 6000 Stara Zagora
167, Tsar Simeon Veliki, A, 25
Tel: + 359 457 670 82,
Fax: + 359 457 670 83

e-mail: sales@lactoscan.com
Eng, Rus: + 359 885 839 532

e-mail: salesdpt@lactoscan.com
Eng: + 359 886 841 389

e-mail: mainservice@lactoscan.com
Eng, Rus: + 359 888 811 017

distributors:

ULTRASONIC MILK ANALYSER
DIRECT MEASUREMENT OF COLD MILK SAMPLES,
starting at 5°C
No need of periodical calibration

Lactoscan SLP

Standard Light Plastic

Lactoscan SLPA

Standard Light Plastic Automat

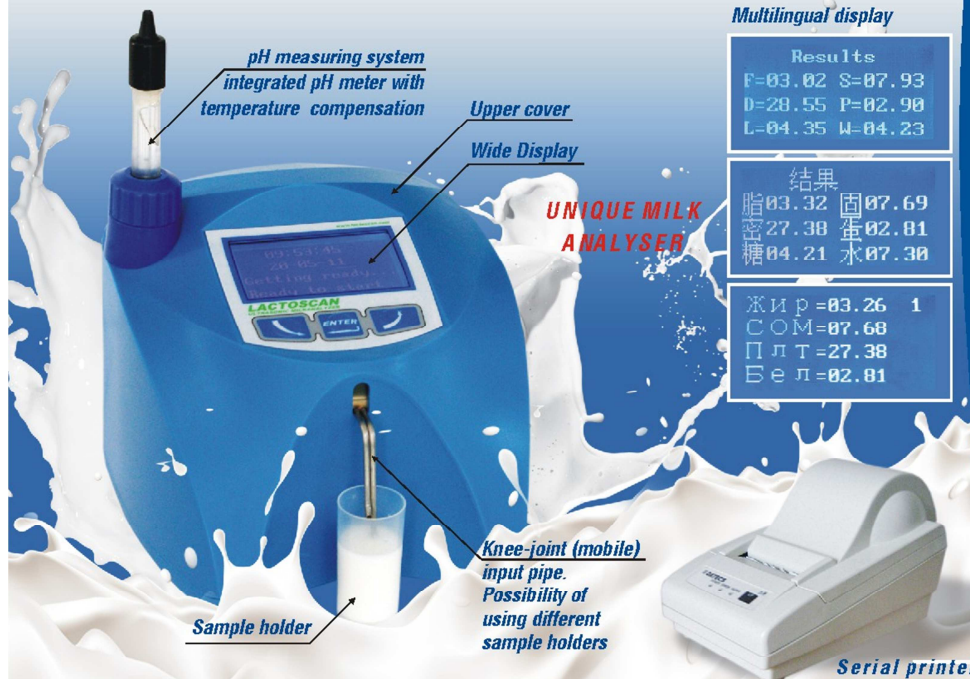
60 sec, 30 sec, 20 seconds measurement

The measurement accuracy
not dependant on milk's acidity
High-end ultrasonic technology
for analyzing any kind of milk

Easily readable results
Self calibration
without computer

KEY FEATURES:

- User-friendly: simple in operation, maintenance, calibration and installation
- Portable and compact design
- Very small quantity of milk required
- Low power consumption
- No use of hazardous chemicals
- One year full warranty
- Measuring accuracy adjustment can be done by the user RS 232 Interface
- ESC POS Printer Support
- Two samples self-calibration



Multilingual display

Results	
F=03.02	S=07.93
D=28.55	P=02.90
L=04.35	W=04.23
結果	
脂03.32	固07.69
密27.38	蛋02.01
糖04.21	水07.30
Жиp=03.26 1	
COM=07.60	
ПлТ=27.38	
Бел=02.01	

SPECIFICATIONS Lactoscan SLP:

Parameter	Measuring range	Accuracy
Fat	from 0.01% to 45%	± 0.06%
SNF	from 3% to 40%	± 0.15 %
Density	from 1000 to 1160 kg/m ³	± 0.3 kg/m ³
Protein	from 2% to 15%	± 0.15%
Lactose	from 0.01 % to 20%	± 0.20%
Added Water content	from 0 % to 70 %	± 3.0%
Temperature of milk	from 5°C to 40°C	± 1°C
Freezing point	from - 0,400 to - 0,700°C	± 0.005 °C
Salts	from 0,4 to 4%	± 0.05%
pH (option)	from 0 to 14	± 0.05%
conductivity (option)	from 2 to 14 mS/cm	± 0.05 (mS/cm)

Milk analyzer Lactoscan makes quick analyses of milk and liquid dairy products:

Cow milk (25%)	Whey	Concentrated milk (up to 1160kg/m ³)
Sheep milk	Cream (up to 45%)	Recovered milk
Buffalo milk	Skimmed milk (0,01% FAT)	Etc.

And can be calibrated by the customer with specific samples of:
Yoghourt, Flavoured milk, Ice-cream mixtures etc.

MEASURING PARAMETERS:

Fat
Solids-non-fat (SNF)
Density
Protein
Lactose
Milk sample temperature
Added water
Salts
Freezing point
Total Solids (option)
pH (option)
Conductivity (option)
Ion meter (option)

This project is
co-funded by the
European Union

